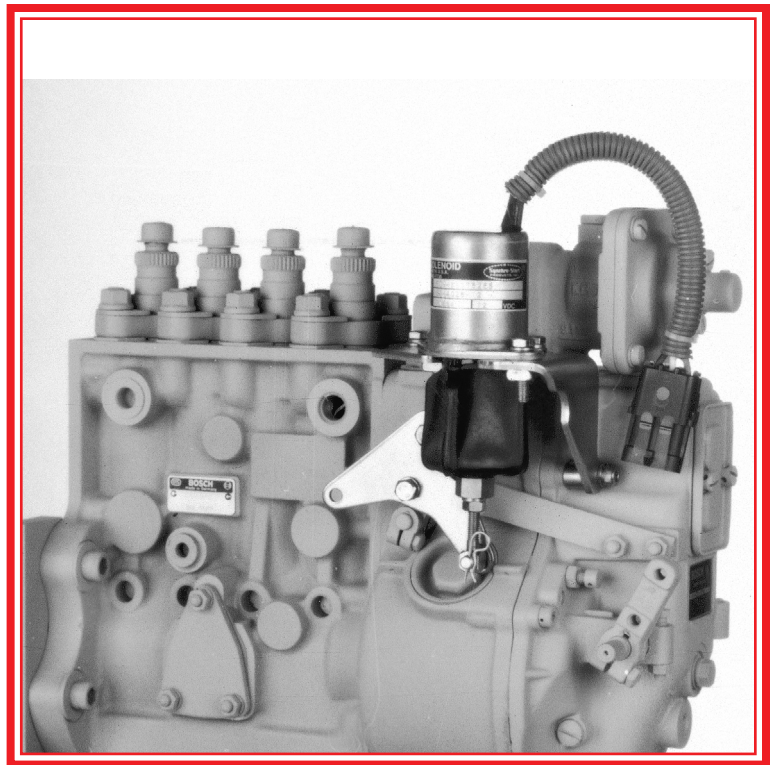




Control & Sensor Technology

Solenoid Shutdown Kits

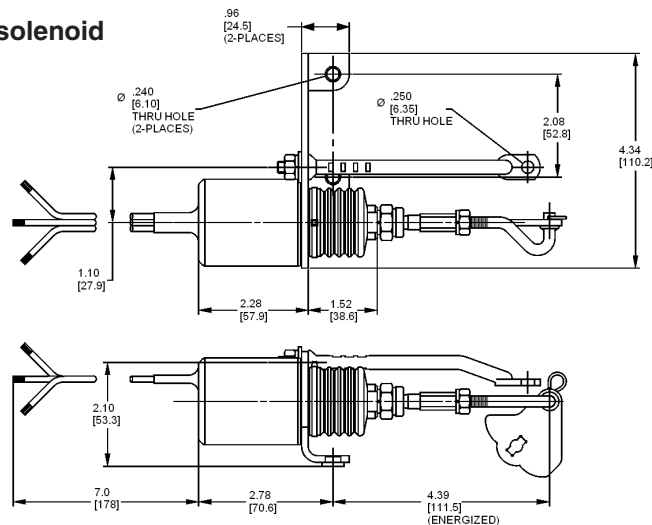
**RSV
Bosch**



Features

- Installs on a variety of engines and Bosch model A, MW, P pumps with RSV governor
- Fast, easy installation
- Available with left or right-hand mounting style
- Available with externally switched (3-wire) or internally switched solenoid, 12 or 24 VDC
- Corrosion resistant plated steel solenoid, bracket, linkage, lever and hardware
- Solenoid plunger hard chrome plated for smooth, reliable, wear resistant operation
- Available with optional Packard Weather-Pack or Metri-Pack sealed connectors

Left-hand kit with 1751ES solenoid



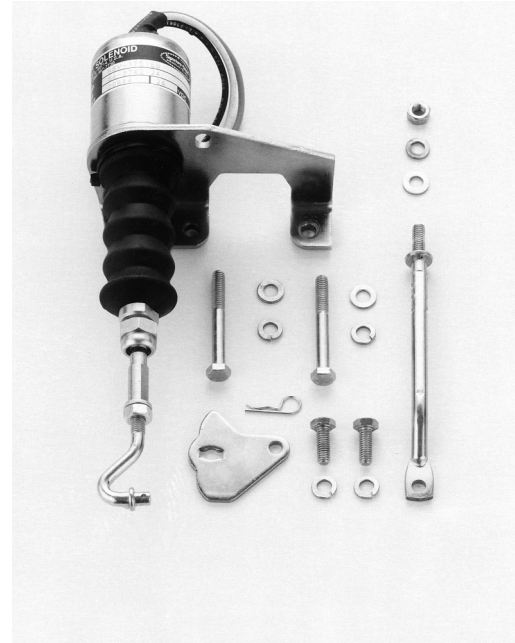
Solenoid Shutdown Kits

RSV Bosch

Specifications

1751ES or 1751

Rated Voltage	12 VDC	24 VDC
Pull Current	46 amps	25 amps
Hold Current	1.1 amps	.5 amps
Pull Rating	20 lbs. (89 Newtons) at rated voltage and 68°F (20°C)	
Hold Rating	40 lbs. (178 Newtons) at rated voltage and 68°F (20°C)	
Ambient Temperature	-40°F (-40°C) to + 250°F (121°C)	
Weight	Approximately 3.0 lbs. (1.4 kg)	



Ordering Information

RSV Bosch

Left-hand Part No.	Right-hand Part No.	Solenoid
SA-3742-12	SA-3799-12	1751ES - 12 VDC
SA-3742-24	SA-3799-24	1751ES - 24 VDC
SA-3765-12	SA-3800-12	1751 - 12 VDC
SA-3765-24	SA-3800-24	1751 - 24 VDC

Contact factory for optional connectors for externally switched (ES) kits



Control & Sensor Technology

www.sspl.com

Synchro-Start Products, Inc.
a Knowles company
6250 West Howard Street
Niles, Illinois 60714-3433
USA
Telephone: 847/967-7730
FAX: 847/967-7832
Synchro.Start@SSPI.com

Synchro-Start Products Europe Limited
York Road
Burgess Hill
West Sussex RH15 9TT
England
Telephone: (+44) (0)1444-872-836
FAX: (+44) (0)1444-239-226
SSPEL@SSPI.com

Synchro-Start Products Asia
No. 20 Su Tong Road
Suzhou Singapore Industrial Park
Jiangsu Province
PRC Postal Code: 215021
Telephone: (0512) 762-6727
FAX: (0512) 761-7765
SSPA@SSPI.com