
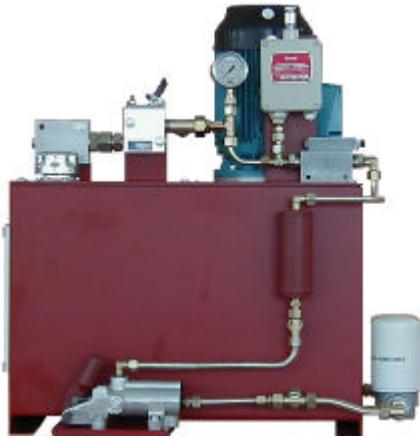
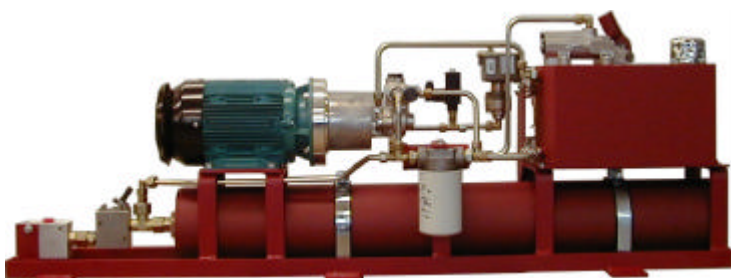
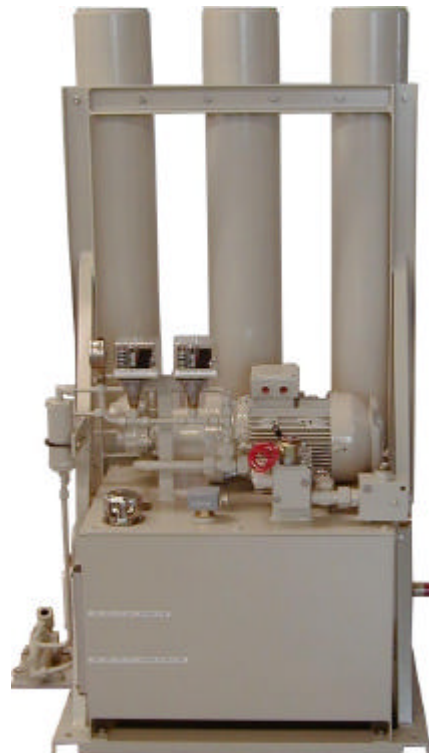
 <p>Products for Engines and Gensets</p>	<p>Document: MPS samples Version: 1 Status: actual Author: mh Date: 07.08.01 Approved: rs Date: 07.08.01 File: PC</p>	<p>Application samples MPS</p>	 <p>HUEGLI TECH LTD SWITZERLAND Tel.: + 41-62-916 50 30 Fax: + 41-62-916 50 35</p>
---	--	--	---



MPS starting system (Variation A) with all components mounted on the tank, fully piped and ground painted. Accumulators are delivered as loose components.

MPS starting system (Variation B) with all components mounted on a frame. The complete system is painted according to the requirement of the customer. The 3 accumulators are mounted vertically.



MPS starting system with all components mounted on a frame. The accumulator is mounted horizontally.