



5009 Fault-tolerant Control

The kernel sections individually monitor all input data, perform all application calculations, and generate all output values and responses. The responses are then assessed within the 2-out-of-3 voting logic. With this configuration, any fault or number of faults associated with a kernel can be tolerated without affecting system operation.

The advantages of triplex architecture as compared to duplex architecture are as follows:

- 2-out-of-3 voting provides superior fault detection of all I/O, hardware, and control algorithms.
- Reliability is vastly improved by extending fault coverage close to 100%.
- The OEM is offered greater flexibility for implementing a variety of fault-tolerant configurations.
- Kernel faults can be isolated without loss of I/O redundancy.

The 5009 also performs as a First-Out indicator for system shutdowns, thus reducing troubleshooting time. Multiple system shutdowns (10) can be brought into the 5009 to allow it to shut down the system safely, latch-in the cause of the shutdown, and time-stamp the event to a 1 millisecond resolution.

The 5009 includes two power supplies, each of which powers the control from a separate power source. Inside each power supply are three independent power converters, one for each CPU/I/O section. Because the CPUs have separate, dedicated power supplies and power busses, any single fault in the power system affects at most one CPU. The triplicated power architecture provides maximum protection against hardware failures.

- No single point of failure
- Full TMR design (triple modular redundancy)
- Fault-tolerant power supplies
- Fault-tolerant relays (latent fault detection)
- Field-configurable standard software
- Windows™ compatible
- Microsoft® Dynamic Data Exchange (DDE)
- Real time multitasking operating system
- Time-stamped I/O
- UL/CSA Class I, Division 2

APPLICATIONS

The 5009 fault-tolerant control is designed to provide highly reliable control on critical steam turbine applications. It can be configured to control condensing, back pressure, and single automatic extraction/admission turbines. The 5009 control features fully triplicated CPU and I/O (TMR) to meet the reliability needs of the industrial turbine control market. The 5009 is field programmable and uses Windows™ menu-driven software to guide site engineers on configuring the control to a specific generator or mechanical drive application. The 5009 can be configured to operate as a stand-alone unit or in conjunction with a plant's Distributed Control System.

DESCRIPTION— FAULT-TOLERANT DESIGN

Woodward's 5009 digital control uses a 32-bit microprocessor to control industrial steam turbines, small utility turbogenerators, or turboexpanders. The 5009 consists of three isolated kernel sections. Each section includes its own power supply, CPU, and I/O modules.

COMMUNICATIONS

The 5009 control can communicate directly with plant Distributed Control Systems and/or CRT based operator control panels, through two ModBus[®] communication ports. These ports support RS-232 communications using ASCII or RTU ModBus transmission protocols.

Communications between the 5009 and a plant DCS can also be performed through hardwired connections. Since all 5009 PID setpoints can be controlled through analog input signals, interface resolution and control is not sacrificed.

FLEXIBILITY

The 5009 is field programmable, allowing site engineers to configure the control to their specific application and make future control configuration changes. The 5009 can be field programmed for mechanical drive or generator applications. Over 100 on-line program adjustments are available to allow program refinements while a unit is running. Inputs and outputs are programmable as required by the application or interface.

SYSTEM PROTECTION

- Integral overspeed protection logic
- First-out indication (individual shutdown inputs)
- Bumpless transfer between control modes if a transducer failure is detected
- Local/remote control priority and selection
- Failsafe shutdown logic

CONTROL

The following PIDs are available to perform as process controllers or limiters:

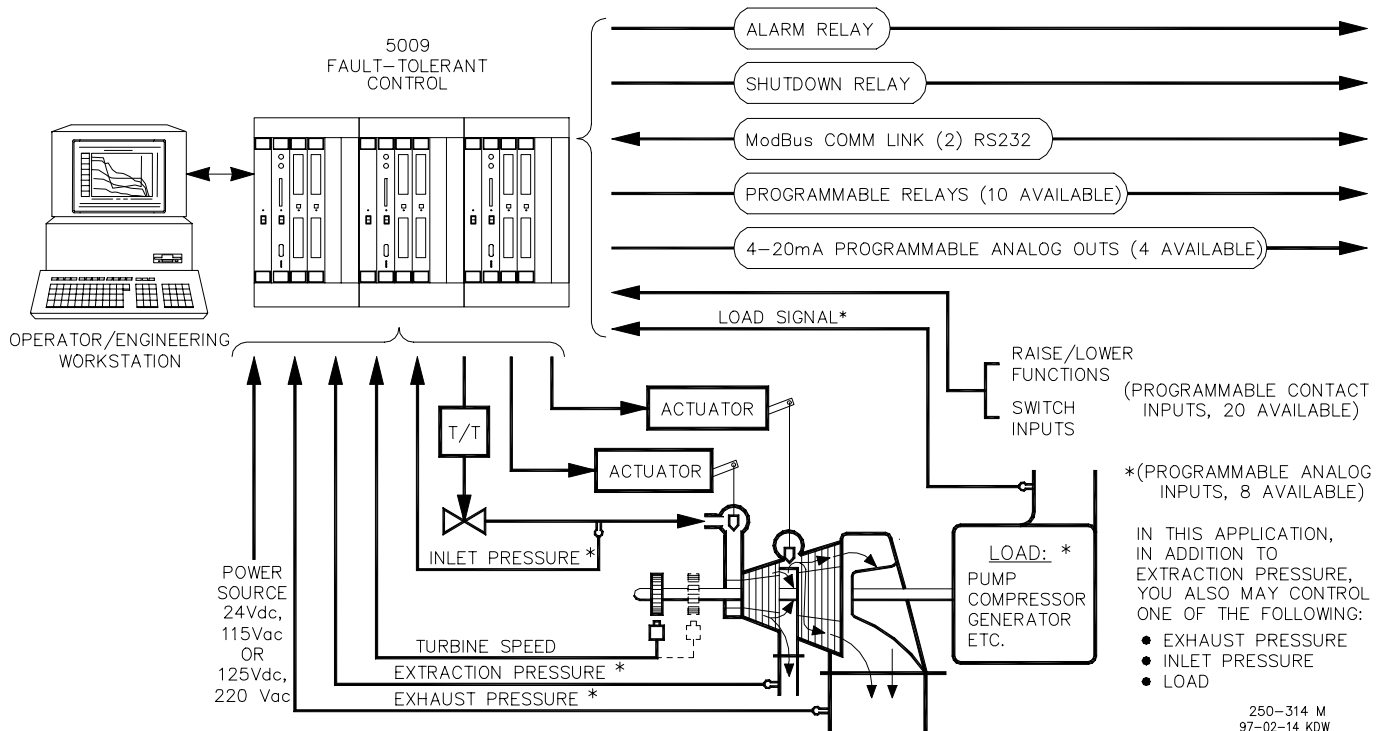
- Speed/Load PID (with Dual Dynamics)
- Auxiliary PID (limiter or control)
- Cascade PID
- Extraction and/or Admission PID

MICROSOFT[®] DDE COMPLIANCE

The 5009 comes with a Windows[™] DDE (Dynamic Data Exchange) server program. When this server is active, Microsoft programs which support DDE (e.g. Excel[®], Word[®], Access[®]) can be used to display live data from the 5009 inside their own documents.

FUNCTIONALITY

- 5009 control capabilities are:
- Speed/frequency control
- Turbine or generator load control/limiting
- Turbine inlet header pressure control/limiting
- Turbine exhaust header pressure control/limiting
- Plant import/export power control/limiting
- Isochronous load sharing between units (with DSLC[™] Digital Synchronizer and Load Control)
- Extraction and/or admission header pressure control
- Any process directly related to unit load



250-314 M
97-02-14 KDW

Controlled Extraction Steam Turbine

FEATURES

- Fault-tolerant I/O handling and processing
- Latent fault detection on relay outputs
- Ten time-stamped external alarms and trips
- Discrete input time-stamp with 1 ms resolution
- Analog input time-stamp with 5 ms resolution
- Extensive fault detection and annunciation
- Critical speed avoidance (2 speed bands)
- Auto start sequence (hot & cold starts)
- Security (password protection)
- Three sensors per critical parameter can be configured
- Dual speed/load dynamics
- First-out indication (shutdowns)
- Zero speed detection with proximity probe down to 0.5Hz
- Peak speed indication for overspeed trip
- Automatic hand valve operation (using first stage pressure)
- Independent ModBus comm links
- Remote analog setpoints for Speed/Load, Auxiliary, cascade, and extraction/admission PIDs
- Windows program for monitoring and adjusting control parameters

CONTROL SPECIFICATIONS

INPUTS

Power	Redundant power supplies with the following input options: 18–36 Vdc, 100–150 Vdc, 88–132 Vac (47–63 Hz), 180–264 Vac (47–63 Hz)
Speed	4 MPUs (1–30 Vrms) or Proximity Probes (24 Vdc and 12 Vdc power provided), 0.5 to 25 kHz
Discrete Inputs	24 Contact Inputs 24 V or 125 Vdc (4 dedicated, 20 Programmable)
Analog Inputs	8 Programmable 4–20 mA Inputs

OUTPUTS

Valve/Actuator Drivers	2 Single- or Dual-Coil Actuator Outputs (4–20 mA or 20–160 mA)
Discrete Outputs	12 Relay Outputs with Latent Fault Detection (2 dedicated, 10 Programmable)
Analog Outputs	4 Programmable Current Outputs (4–20 mA)

COMMUNICATION

Serial	2 ModBus (ASCII or RTU) Comm Ports (RS-232 compatible)
Serial	1 PC port for programming, on-line adjustments, system monitoring and troubleshooting

OPERATING CONDITIONS

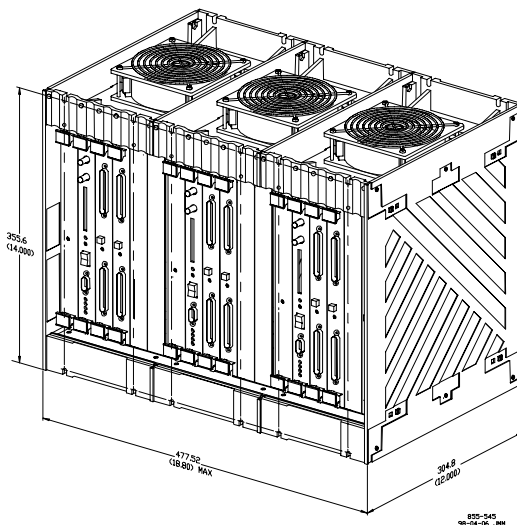
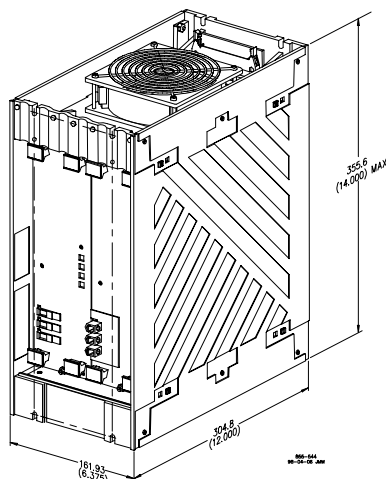
Temperature	0 to +55 °C ambient air temperature range
Shock	MIL-STD-810C, Method 516.2-1, Procedure 1B
Vibration	Lloyd's ENV2 test #1
Emissions	EN55011, Class A, Gr 1
Immunity	EN50082-2 (1995)

5009 CHASSIS

Bulkhead or Adaptable to 19" (483 mm) rack mount back panel with 18 slot VME mother board and chassis

Approximate dimensions:

Control chassis	19" wide x 14" high x 12" deep (483 mm wide x 356 mm high x 305 mm deep)
Power chassis	7" wide x 14" high x 12" deep (178 mm wide x 356 mm high x 305 mm deep)
Approximate weight	56 lbs (25 kg) fully loaded



Power Chassis and Control Chassis

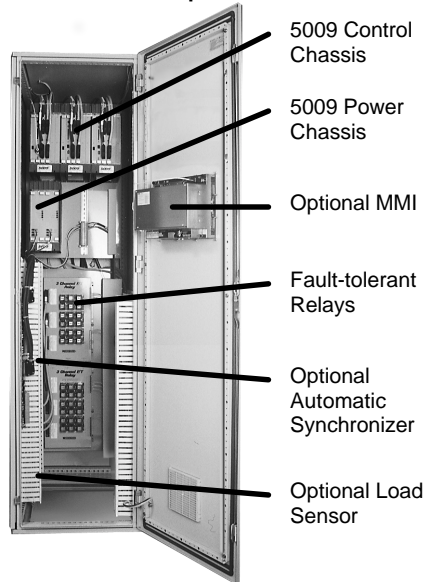
PO Box 1519
 1000 East Drake Road
 Fort Collins CO, USA
 80522-1519
 Ph: (1)(970) 482-5811
 Fax: (1)(970) 498-3058
www.woodward.com

**Plants, Subsidiaries,
 Branch/Regional Offices**
 Australia
 Brazil
 China
 Czech Republic
 England
 Germany
 India
 Japan
 Korea
 Mexico
 Netherlands
 New Zealand
 Poland
 Scotland
 Singapore
 United Arab Emirates
 United States

Distributors & Service
 Woodward has an international network of distributors and service facilities. For your nearest representative call (1)(800) 835-5182 or see the Worldwide Directory on our web site (<http://www.woodward.com/industrial/address.htm>).

Corporate Headquarters
 Rockford IL, USA
 Ph: (1)(815) 877-7441

5009 Installed in Optional Cabinet



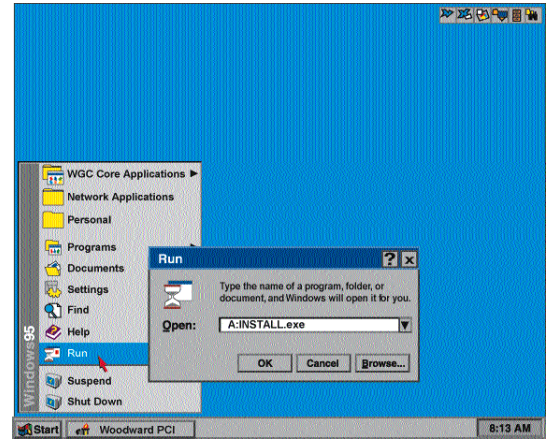
Not shown: optional rolling restart station and 19" rack mount adapter kit

5009 Available Options
 (any or all options may be selected)

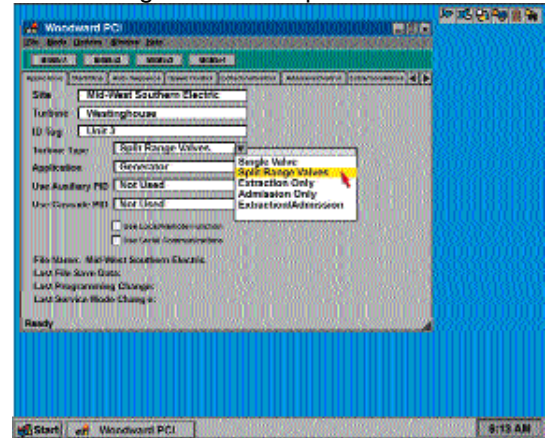
- Standard Cabinet (NEMA 12, ~24x87x32", ~610x2210x813 mm)
- Standard MMI with Self-generating Graphics
- Automatic Synchronizer
- Load Sensor
- Rolling Re-start Station (OCP)
- 19" (~483 mm) Rack Mount Adapter Kit

Programming is easy:

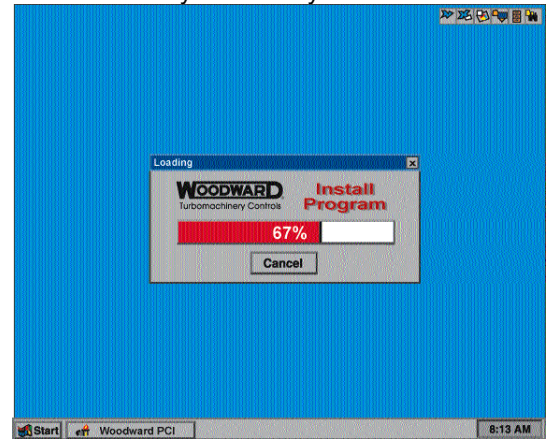
1–Place "Install Program" in your Windows 95 PC.



2–Configure system through user friendly "Install Program" and drop-down windows.



3–Download system into your 5009.



This document is distributed for informational purposes only. It is not to be construed as creating or becoming part of any Woodward Governor Company contractual or warranty obligation unless expressly stated in a written sales contract.

For more information contact: